

Mariposa 1,793 sq. ft.

Tradition Series

Quail Creek



Exterior Design A



Exterior Design B



Exterior Design C



Quail Creek®

A ROBSON RESORT
COMMUNITY™

520.648.0332 • robson.com

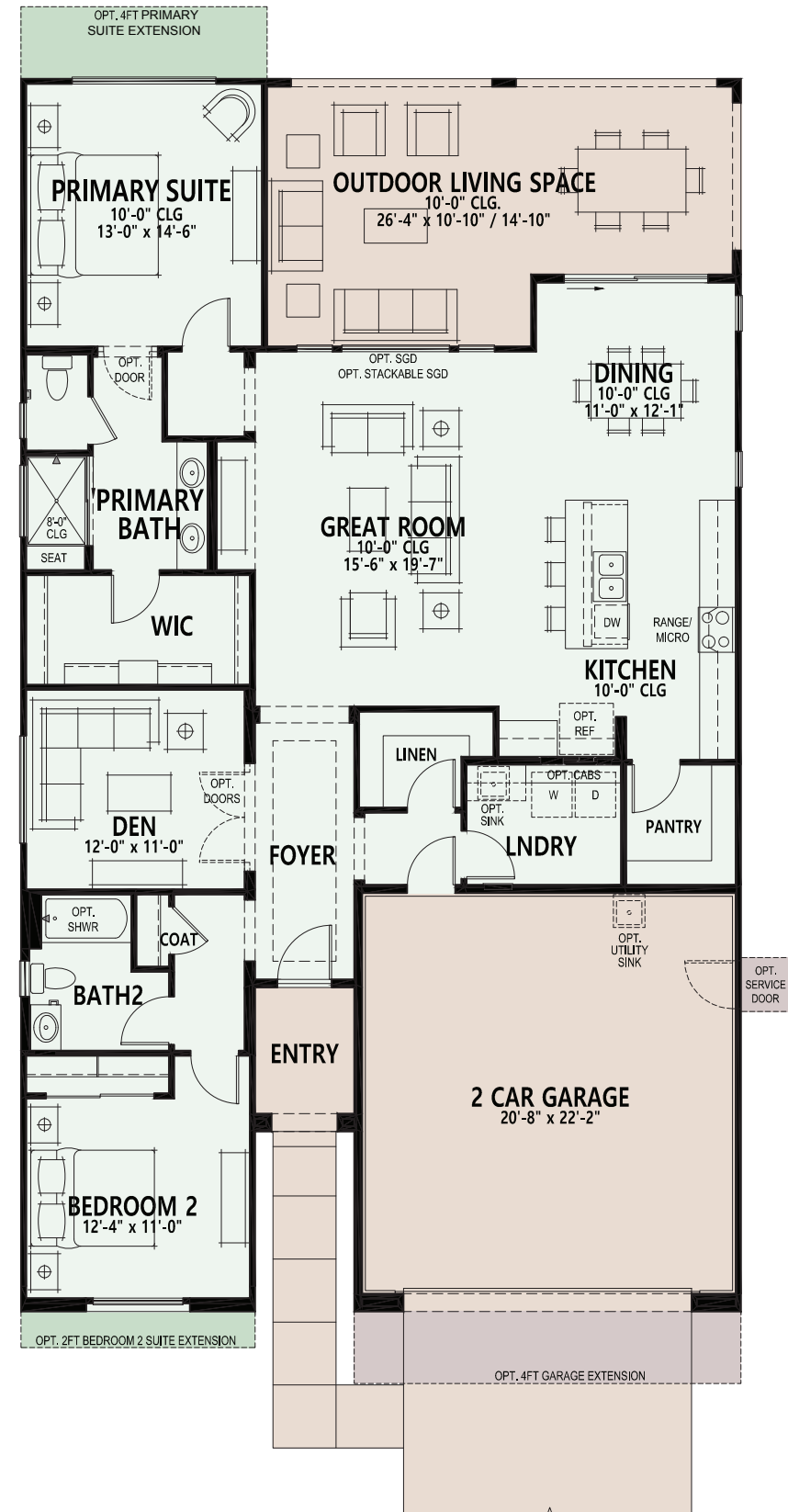
Go to robson.com for the latest floorplan updates.

Mariposa 1,793 sq. ft.

Tradition Series

Quail Creek

- 2 Bedrooms, 2 Baths
- Great Room
- Dining Area
- Den
- Walk-in Pantry
- Laundry Room
- Optional Walk-up Bar
- Optional Powder Room
- Deep 2-Car Garage
- Optional Golf Cart Garage
- Spacious Covered Outdoor Living Space



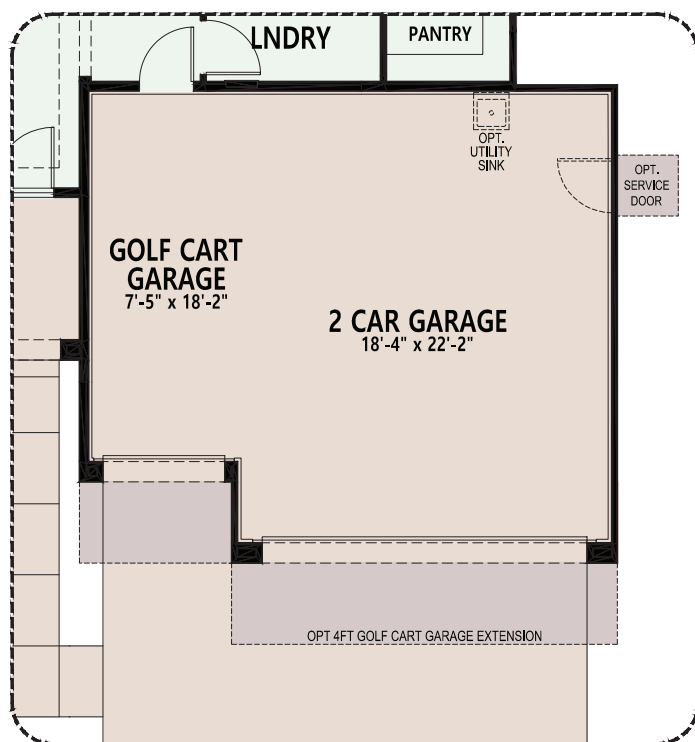
Standard Livable Space
Optional Livable Space
Standard Concrete Areas
Optional Concrete Areas

Go to robson.com for the latest floorplan updates.

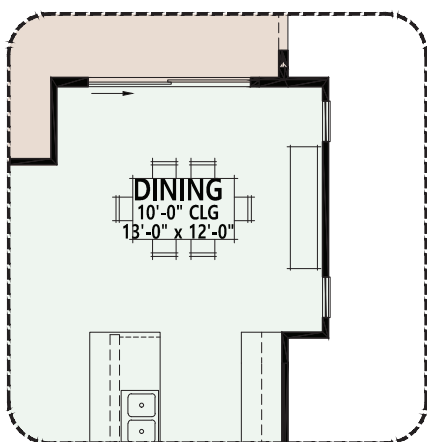
Mariposa 1,793 sq. ft.

OPTIONS Quail Creek

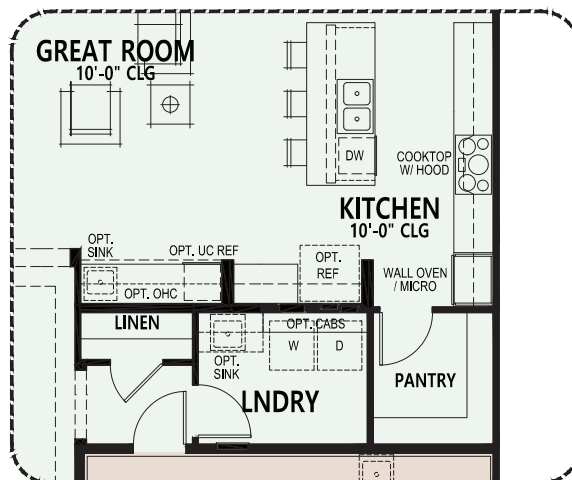
At Quail Creek, you can personalize your home with a variety of options and features.



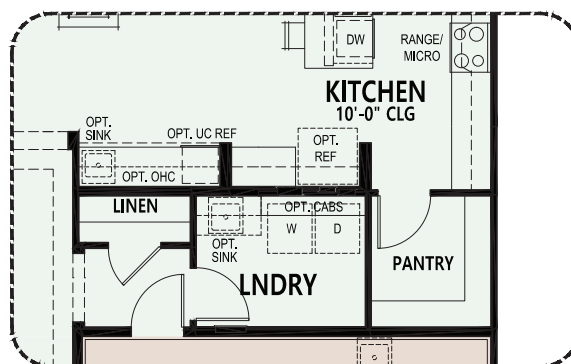
Opt. Golf Cart Garage



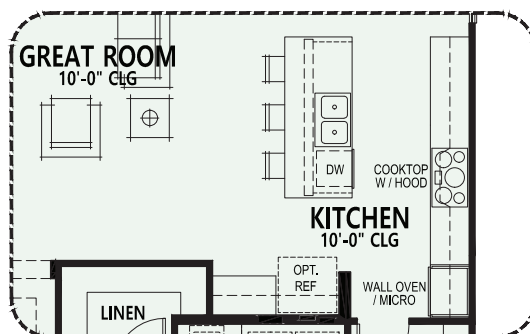
Opt. 2ft Dining Extension



Alternate Built-in Kitchen
w/ Opt. Walk Up Bar



Opt. Walk Up Bar



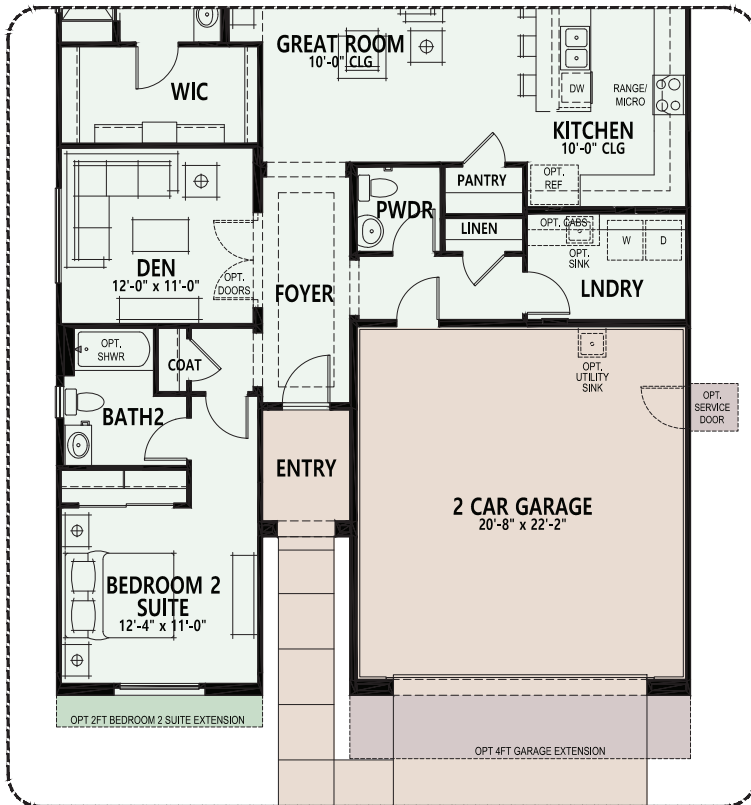
Alternate Built-in Kitchen

Due to the variety of options allowing you to personalize your home, there may be some options which cannot be combined due to structural limitations. Please check with your New Home or Design Consultant.

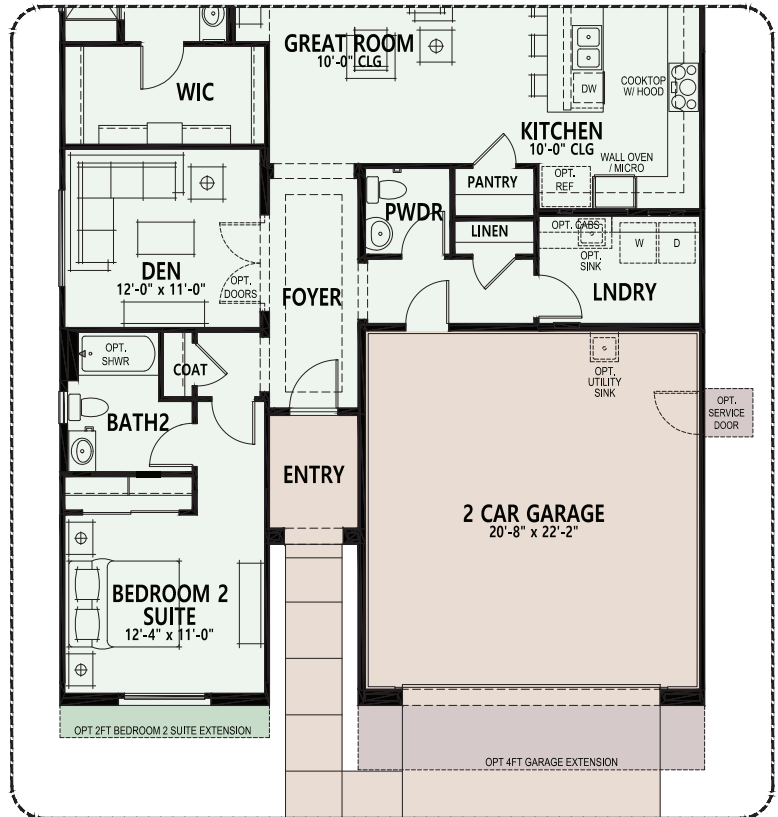
Mariposa 1,793 sq. ft.

OPTIONS Quail Creek

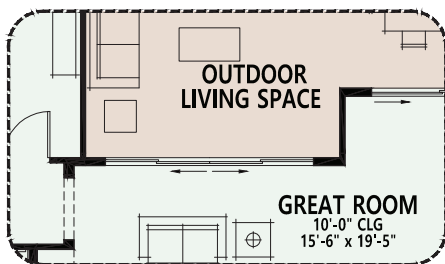
At Quail Creek, you can personalize your home with a variety of options and features.



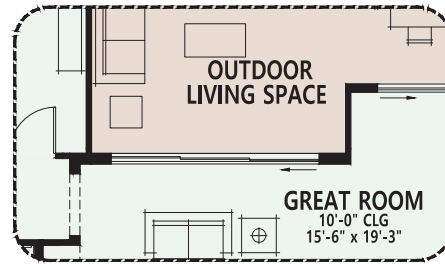
Opt. Powder Room



Alternate Built-in Kitchen w/ Opt. Powder Room



Opt. 12080 SGD



Opt. 12080 Stackable SGD

Due to the variety of options allowing you to personalize your home, there may be some options which cannot be combined due to structural limitations. Please check with your New Home or Design Consultant.

All information is subject to change without notice. We reserve the right to discontinue or change specifications at any time. Promotional materials may show features, options, upgrades or improvements that are only available at additional cost and that are not included unless specifically provided for in the purchase contract. All dimensions and measurements, including without limitation square footages, ceiling heights and window sizes, styles and locations, are approximate and may vary per elevation and floorplan. Measurements in model homes may vary slightly without incurring any obligation or liability. Actual lot sizes and home measurements will vary. Lot size and actual position of the home on the lot will be determined by the site plan and final plot plan based upon the particular home and lot selected. Interior and/or exterior photos or illustrations of models may have been taken at other Robson Resort Communities®, are artist's conceptions and are not intended to show specific detail for homes at any particular Robson Resort Community™. Many options are available and will vary per floorplan. Due to the variety of options allowing you to personalize your home, there may be some options which cannot be combined due to structural limitations. Please check with your New Home or Design Consultant. Elevation appearance will change with the addition of a guest suite, separate casita, golf cart garage, bay windows or any other applicable structural option/upgrade. Check with your New Home Consultant. The housing at any Robson Resort Community™ is intended for occupancy by at least one person 55 years of age or older per dwelling unit, although the occupants of a limited number of dwelling units may be younger. One person must be at least 40 years of age in each unit. No one in permanent residence under 19 years of age. Homes are offered and sold by Robson Ranch Quail Creek, LLC, owner/agent. Robson Ranch Arizona Construction Company, general contractor, ROC 192584. No offer for sale or lease may be made or accepted prior to buyer's receipt of an Arizona subdivision public report. A public report is available on the state real estate department's website. This material shall not constitute an offer in any state where registration is required or if in violation of law. Effective date 9/17/24. All photos/pictorials are artist's conception.

© 2024 Robson Communities®, Inc. All rights reserved.