

# Avalon 2,695 sq. ft.

Estate Series  
SaddleBrooke Ranch



Exterior Design A



Exterior Design C



Exterior Design D



**SaddleBrooke Ranch™**  
A ROBSON RESORT COMMUNITY  
520.818.6000 • [robson.com](http://robson.com)

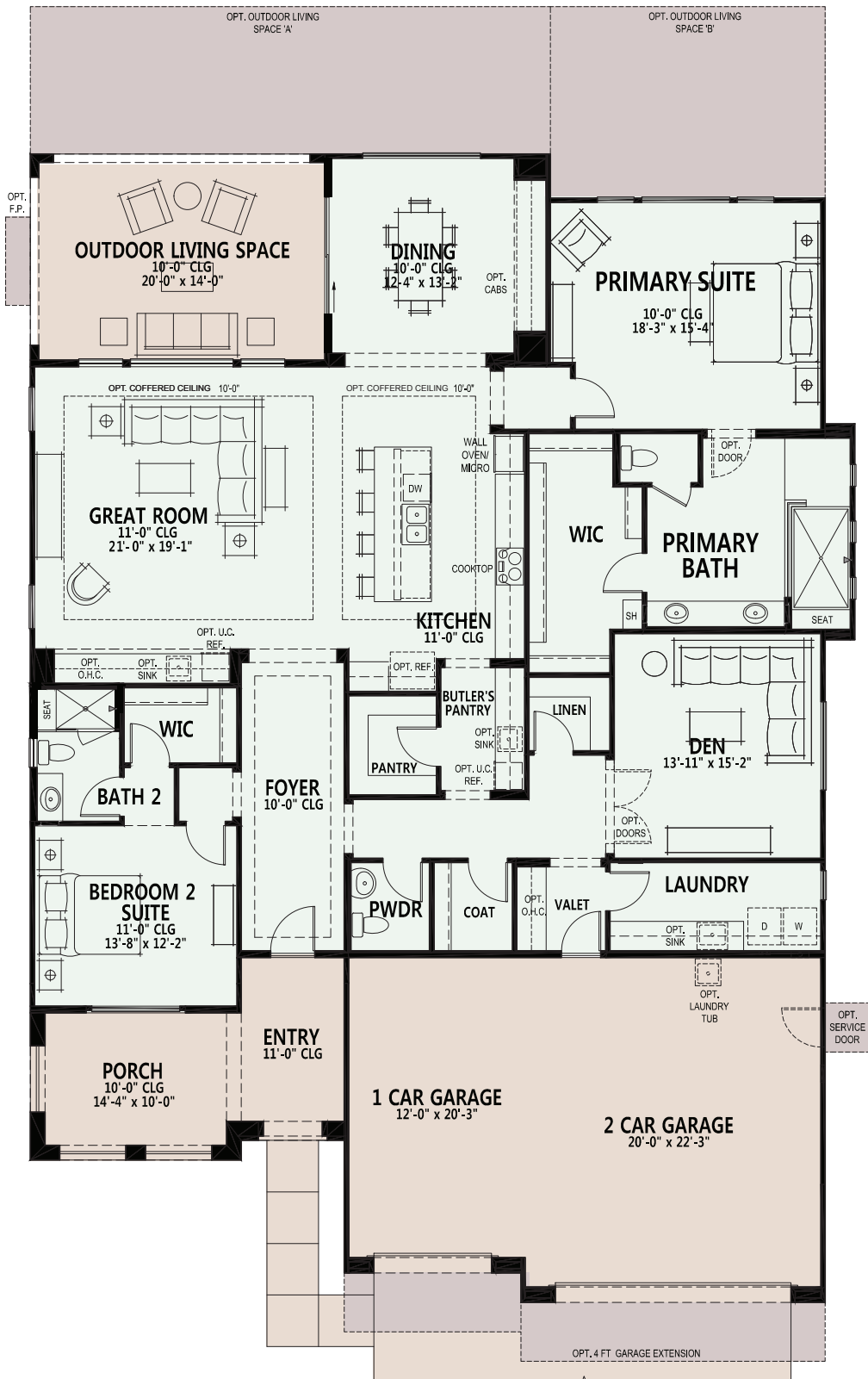


2020  
**Gold Winner**  
Best of 55+  
Housing Awards

Go to [robson.com](http://robson.com) for the latest floorplan updates.

# Avalon 2,695 sq. ft.

## Estate Series SaddleBrooke Ranch



- 2 Bedroom Suites, 2 Baths
- Powder Room
- Great Room
- Dining Area
- Grand Kitchen Island
- Walk-in Pantry
- Butler's Pantry
- Spacious Den
- Primary Bath 48" x 84" Walk-in, Curbless Shower and Built-in Seat
- Generous Walk-in Closet in Primary Suite
- Walk-in Closet in Bedroom 2 Suite
- Spacious Laundry Room
- Deep 3-Car Garage
- 280 sq. ft. of Covered Outdoor Living Space
- Walk-in Linen Closet
- Walk-in Coat Closet
- 9', 10' & 11' Ceiling Heights
- Front Porch with Selected Elevations
- Optional Bedroom 3 Suite
- Optional Guest Suite and Sitting Room
- Optional Office with Walk-in Storage
- Optional Dog Wash
- Optional Den Expansion
- Optional Expanded Laundry

Standard Livable Space
  Optional Livable Space
  Standard Concrete Areas
  Optional Concrete Areas

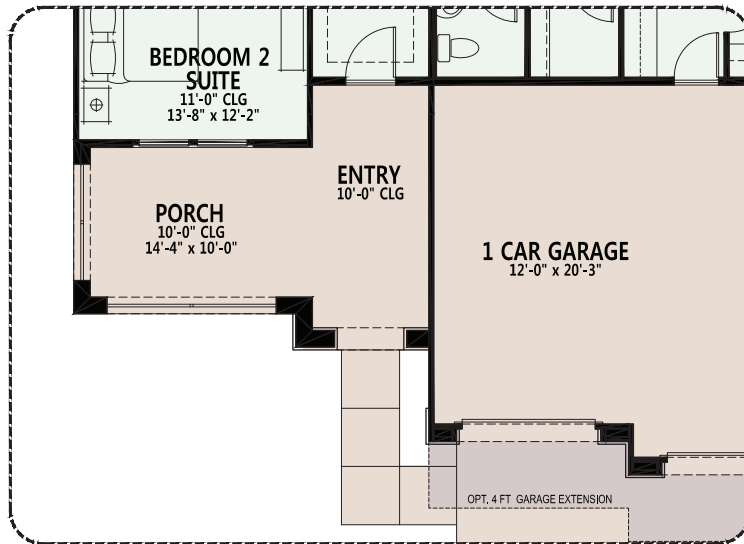
Go to [robson.com](http://robson.com) for the latest floorplan updates.

# Avalon 2,695 sq. ft.

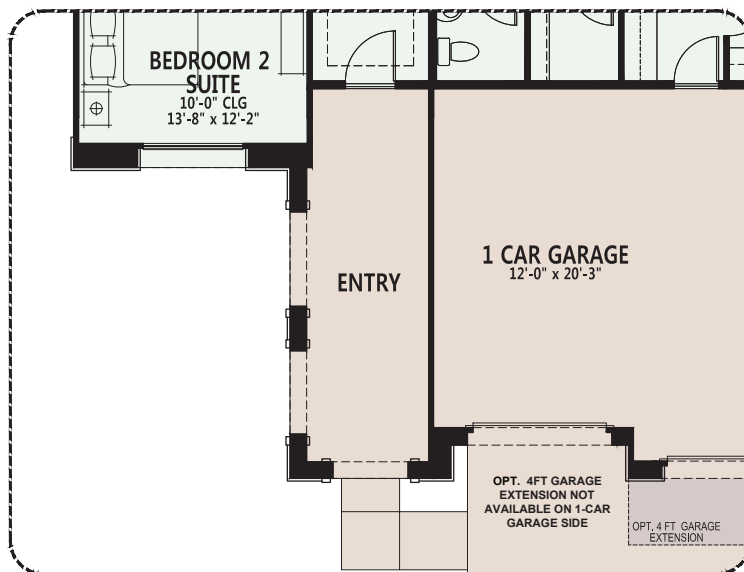
## OPTIONS

### SaddleBrooke Ranch

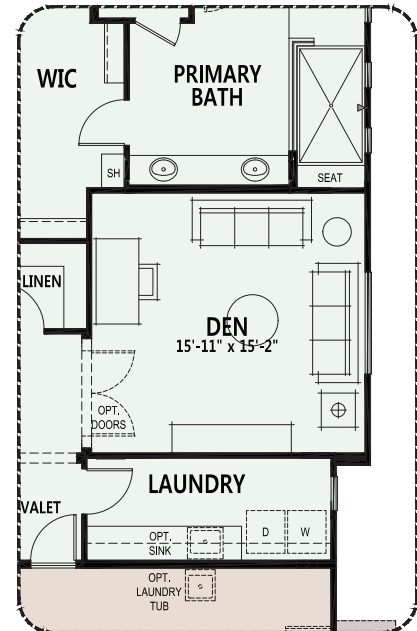
At SaddleBrooke Ranch, you can personalize your home with a variety of options and features.



Elevation C



Elevation D



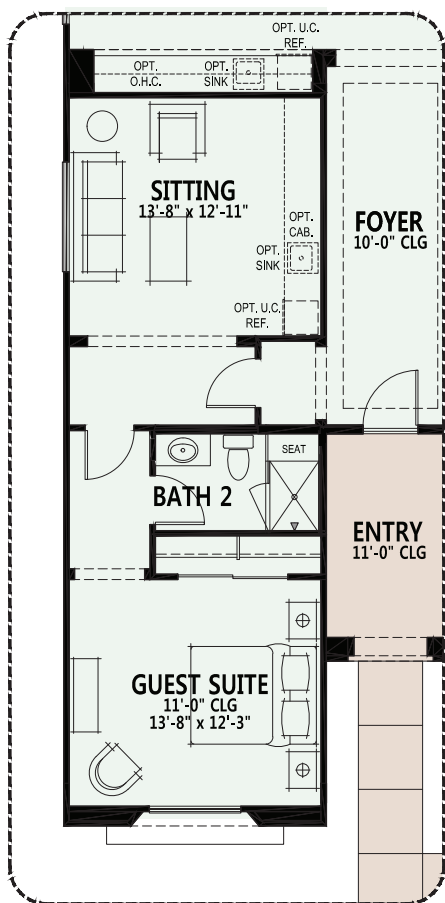
Opt. 2 ft. Den Extension

Due to the variety of options allowing you to personalize your home, there may be some options which cannot be combined due to structural limitations. Additional options and room extensions that increase the livable and non-livable, under roof plan square footage may require home buyer(s) to select the optional fire sprinklers as mandated by the municipality. Please see your New Home Consultant for further details.

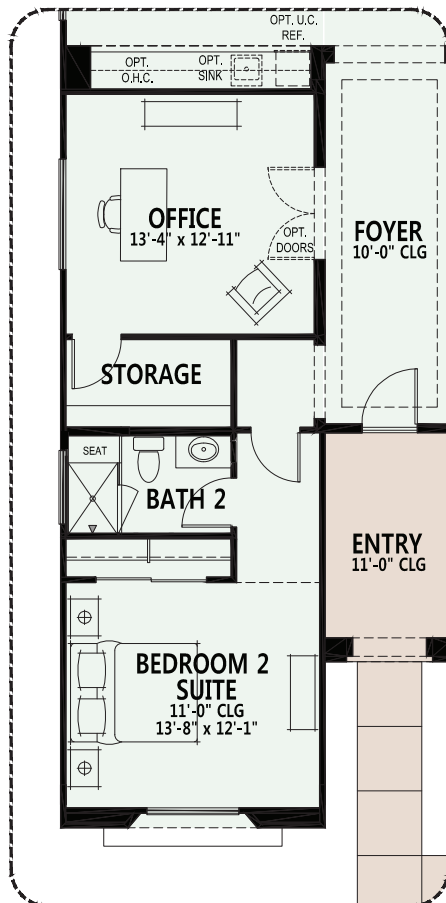
# Avalon 2,695 sq. ft.

## OPTIONS SaddleBrooke Ranch

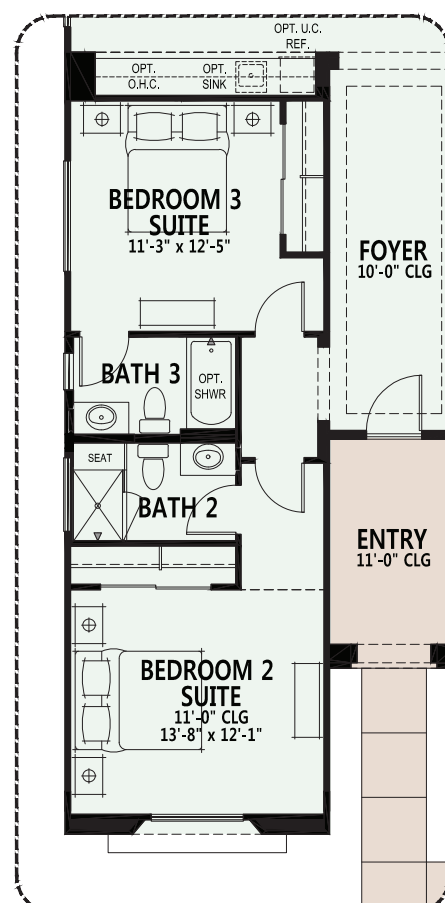
At SaddleBrooke Ranch, you can personalize your home with a variety of options and features.



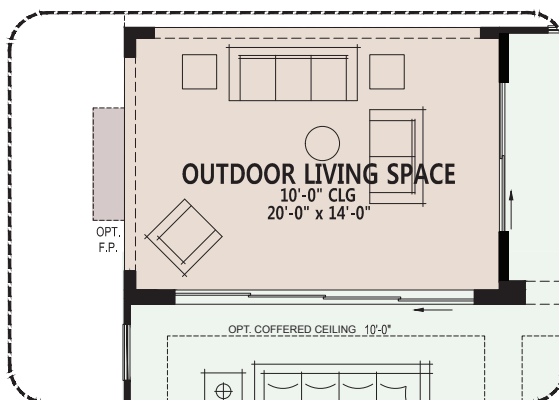
Opt. Guest Suite



Opt. Office



Opt. Bedroom 3 Suite



Opt. 16080 Stackable SGD

Due to the variety of options allowing you to personalize your home, there may be some options which cannot be combined due to structural limitations. Additional options and room extensions that increase the livable and non-livable, under roof plan square footage may require home buyer(s) to select the optional fire sprinklers as mandated by the municipality. Please see your New Home Consultant for further details.

OPTIONS

SaddleBrooke Ranch

**1 CAR GARAGE**  
12'-0" x 20'-3"

**2 CAR GARAGE**  
20'-0" x 22'-3"

**OPT. 4 FT. GARAGE EXTENSION**

**STORAGE**  
11'-0" x 4'-0"

**PWDR**

**COAT**

**OPT. CLO.**

**VALET**

**LAUNDRY**

**OPT. SINK**

**D W**

**OPT. LAUNDRY TUB**

**OPT. SERVICE DOOR**

**1 CAR GARAGE**  
12'-0" / 11'-0" x 20'-3"

**2 CAR GARAGE**  
20'-0" x 22'-3"

**LAUNDRY**

**VALET**

**COAT**

**PWDR**

OPT. O.H.C.

OPT. SINK

D W

OPT. LAUNDRY TUB

OPT. SERVICE DOOR

OPT. 4 FT GARAGE EXTENSION NOT AVAILABLE ON 1-CAR GARAGE SIDE

OPT. 4 FT. GARAGE EXTENSION

Floor plan for the second floor of a house. The plan includes a primary bathroom with a bathtub, toilet, and shower; a walk-in closet (WIC); a dining area with a table and chairs; a kitchen with a cooktop and oven/micro; a linen closet; and a den with a sofa and chairs. Dimensions for the den are 13'-11" x 15'-2". An optional door is shown leading from the primary bathroom to the den.

All information is subject to change without notice. We reserve the right to discontinue or change specifications at any time. Promotional materials may show features, options, upgrades or improvements that are only available at an additional cost and that are not included unless specifically provided for in the purchase contract. All dimensions and measurements, including without limitation square footages, ceiling heights and window sizes, styles and locations, are approximate and may vary per elevation and floorplan. Measurements in model homes may vary slightly without incurring any obligation or liability. Actual lot sizes and home measurements will vary. Lot size and actual position of the home on the lot will be determined by the site plan and final plot plan based upon the particular home and lot selected. Interior and/or exterior photos or illustrations of models may have been taken at other Robson Resort Communities®, are artist's conceptions and are not intended to show specific detail for homes at any particular Robson Resort Community™. Many options are available and will vary per floorplan. Due to the variety of options allowing you to personalize your home, there may be some options which cannot be combined due to structural limitations. Please check with your New Home or Design Consultant. Elevation appearance will change with the addition of a guest suite, separate casita, golf cart garage, 2nd story, bay windows or any other applicable structural option/upgrade. Check with your New Home Consultant. The housing at any Robson Resort Community™ is intended for occupancy by at least one person 55 years of age or older per unit, although the occupants of a limited number of dwelling units may be younger. One person must be at least 40 years of age in each unit. No one in permanent residence under 19 years of age. Homes are offered and sold by SaddleBrooke Development Company, broker for Robson Ranch Mountains, LLC, owner. Robson Ranch Arizona Construction Company, general contractor, ROC 192584. No offer for sale or lease may be made or accepted prior to buyer's receipt of an Arizona subdivision public report. A public report is available on the Arizona state real estate department's website. This material shall not constitute an offer in any state where registration is required or if in violation of law. Effective date 9/19/24. All photos/illustrations are artist's conception. © 2024 Robson Communities®, Inc. All rights reserved.